



**Schneider**  
youngplants

# Best in Class Perennials



# True Grower Genetics | Cultivating Excellence | Season 2024

Varieties that receive the the TGG stamp are proven as Top Genetics and standing for reliable production and excellent performance at the grower's place

871008	Achillea millefolium Skysail Fire	874104	Phlox paniculata Early® Lavander Pop
871012	Achillea millefolium Skysail Yellow	874106	Phlox paniculata Early® Magenta
871004	Achillea millefolium Skysail Bright Pink	874110	Phlox paniculata Early® Pink
872014	Gaillardia aristata SpinTop™ Yellow Touch	874114	Phlox paniculata Early® Red
872010	Gaillardia aristata SpinTop™ Orange Halo Imp	874116	Phlox paniculata Early® White
872006	Gaillardia aristata SpinTop™ Mango	874122	Phlox paniculata Flame Lilac Star
872001	Gaillardia aristata SpinTop™ Mariachi Red Sky	874124	Phlox paniculata Flame Pink
872108	Gaura lindheimeri Graceful Light Pink	874140	Phlox paniculata Flame Purple Eye
872112	Gaura lindheimeri Graceful White	874144	Phlox paniculata Flame Watermelon
872110	Gaura lindheimeri Graceful Pink	11274022	Phlox subulata Spring® Blue
872106	Gaura lindheimeri Graceful Blush	11274026	Phlox subulata Spring® Hot Pink
872115	Gaura lindheimeri Monarch Pink	11274028	Phlox subulata Spring® Lavender
872112	Gaura lindheimeri Monarch White	11274034	Phlox subulata Spring® Pink
872613	Iberis sempervirens White Shadow	11274038	Phlox subulata Spring® Purple
873594	Lavandula stoechas LaDiva Big Night	11274019	Phlox subulata Spring® Scarlet
873597	Lavandula stoechas LaDiva Berry Beautiful	11274020	Phlox subulata Spring® Soft Pink
873590	Lavandula angustifolia LaDiva Spirit Purple Blue	11274040	Phlox subulata Spring® White
873600	Leucanthemum maximum Sweet Daisy™ Christine	12274029	Phlox subulata Spring® Dark Leaf Pink
873612	Leucanthemum maximum Sweet Daisy™ Jane	874562	Salvia nemorosa Midnight Purple
873614	Leucanthemum maximum Sweet Daisy™ Rebecca	874564	Salvia nemorosa Midnight Rose
873610	Leucanthemum maximum Sweet Daisy™ Izabel	874570	Salvia nemorosa Salute Blue
873676	Monarda didyma Pocahontas Red Rose	874568	Salvia nemorosa Royal Magenta
		874563	Salvia nemorosa Noche
		874557	Salvia nemorosa Noble Knight
		875020	Veronica Candela Blue
		875021	Veronica Candela Pink



DÜMMEN ORANGE®

**Schneider**  
youngplants



# Achillea Skysail Serie





# Achillea Skysail Serie 19 cm



## TOP NEW Achillea Serie

- 17 cm pot 1 cutting
- 19 cm pot 2 cuttings
- 3 colors
- Recommended potting weeks  
12-24 (first year Flowering )



- 871008 Achillea millefolium Skysail Fire
- 871012 Achillea millefolium Skysail Yellow
- 871004 Achillea millefolium Skysail Bright Pink



DÜMMEN ORANGE.

**Schneider**  
youngplants

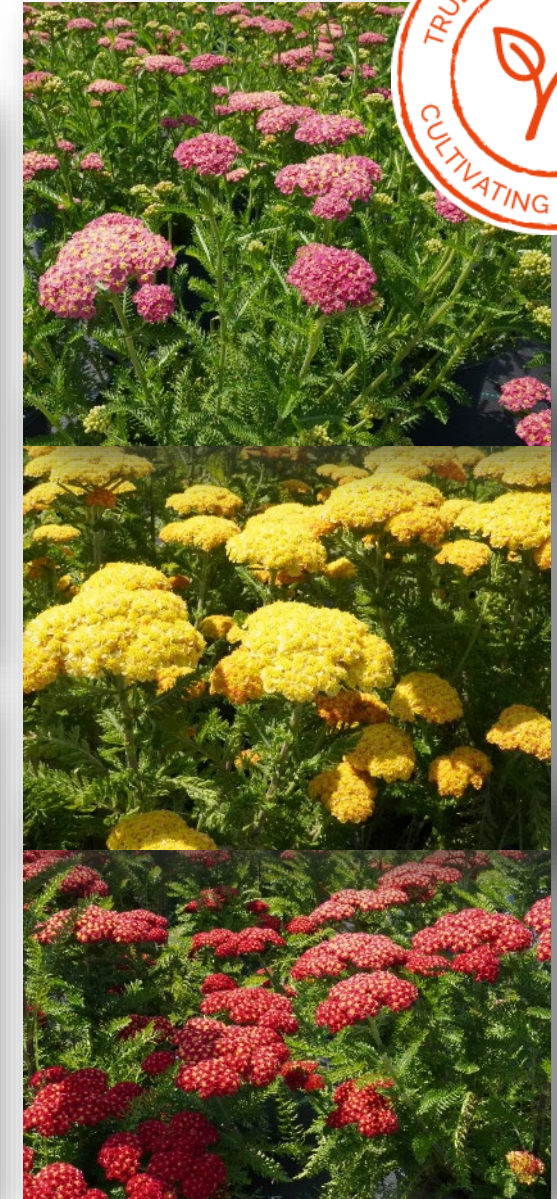


# Achillea Skysail Serie 23 cm

TOP NEW Achillea Serie for overwintered

- 23 cm pot 1 cutting
- RC weeks for overwintering  
✓ 38-42

- 871008 Achillea millefolium Skysail Fire
- 871012 Achillea millefolium Skysail Yellow
- 871004 Achillea millefolium Skysail Bright Pink





# Achillea Skysail Serie in trio

- 873612 Leucanthemum Sweet Daisy Jane
- 871004 Achillea Skysail Bright Pink
- 874130 Phlox Flame Pro Pink Pop





# Gaillardia SpinTop Serie





# Gaillardia SpinTop Serie 12 cm



## TOP Gaillardia Serie

- 12-17 cm pot 1 cutting
- 19 cm pot 2 cuttings
- Flowering 7 weeks after potting
- Recommended potting weeks 12-24  
(first year Flowering )



- 872014 Gaillardia aristata Spintop™ Yellow Touch
- 872010 Gaillardia aristata Spintop™ Orange Halo Imp
- 872006 Gaillardia aristata Spintop™ Mango
- xxx Gaillardia aristata Spintop™ Mariachi Red Sky



# Gaillardia SpinTop Serie 19 cm



## TOP Gaillardia Serie

- 12-17 cm pot 1 cutting
- 19 cm pot 2 cuttings
- Flowering 7 weeks after potting
- Recommended potting weeks 12-24 (first year Flowering )





# Gaillardia Spintop Serie 19 cm



## TOP Gaillardia Serie over wintered

- 19 cm pot 1 cutting
- Flowering week 21
- Stick in autumn in plug
- Overwinter inside cold greenhouse or plastic tunnel
- Plant outside week 12 ( Germany )

✓ **RC WEEKS 34-42**



- |        |   |
|--------|---|
| 872014 | Gaillardia aristata Spintop™ Yellow Touch     |
| 872010 | Gaillardia aristata SpinTop™ Orange Halo Imp  |
| 872006 | Gaillardia aristata SpinTop™ Mango            |
| 872001 | Gaillardia aristata SpinTop™ Mariachi Red Sky |



DÜMMEN ORANGE.

**Schneider**  
youngplants



# Gaillardia SpinTop Serie in combinations



- 874560 Salvia Caramia
- 872014 Gaillardia SpinTop Yellow Touch
- 873612 Leucanthemum Sweet Daisy Jane



DÜMMEN ORANGE.

**Schneider**  
youngplants



# Gaura Gracefull & Monarch





# Gaura Gracefull & Monarch



DÜMMEN ORANGE.

**Schneider**  
youngplants



# Gaura Gracefull & Monarch



## TOP Gaura Varieties

- Monarch for bigger container
- Gracefull more compact
- Gracefull 10 days faster compared to Monarch
- Monarch 20% more vigor
- Can be used as an annual | indoor
- Excellent landscape item

✓ **RC WEEKS 06-22**

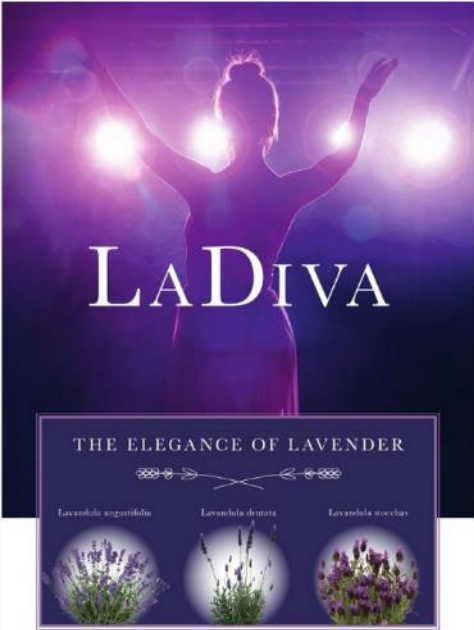
- 872108 Gaura lindheimeri Graceful Light Pink
- 872112 Gaura lindheimeri Graceful White
- 872110 Gaura lindheimeri Graceful Pink
- 872106 Gaura lindheimeri Graceful Blush
- 872115 Gaura lindheimeri Monarch Pink
- 872113 Gaura lindheimeri Monarch White



DÜMMEN ORANGE®

**Schneider**  
youngplants





# Lavandula La Diva



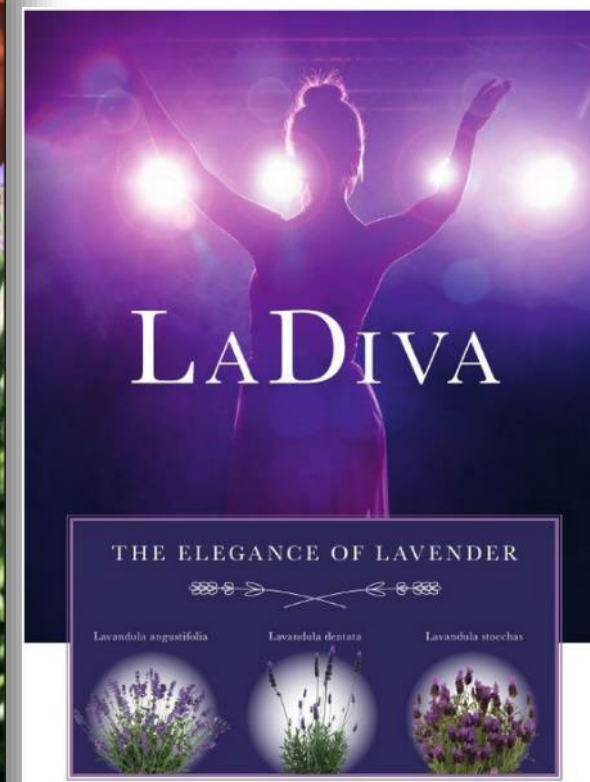
## TOP Lavendel varieties

- 12 cm -17 pot 1 cutting
- Plant between 28-32 (Germany)
- Over winter indoor or cold plastic house (avoid humidity - low temperatures are no problem )
- Potting or moving outside before week 8 ( important to be outside before the crop starts to grow )
- Currently main focus North Europe

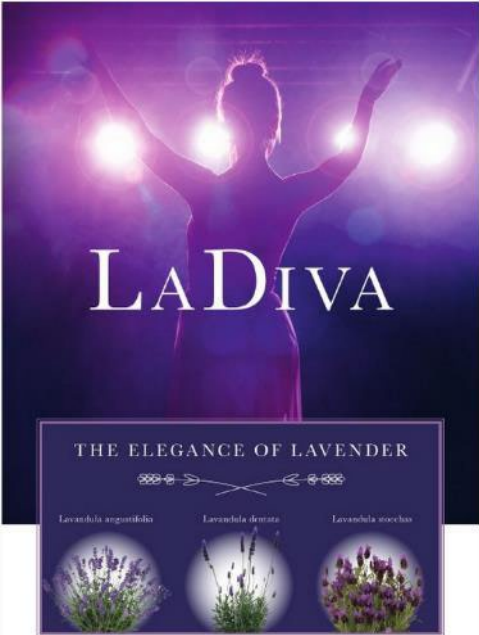




# Lavandula La Diva Dentata







TOP Lavendel varieties

- 12 cm pot 1 cutting
- 19-23 cm pot 3 cuttings
- Currently main focus South Europe

✓ **RC WEEKS**

- ✓ Imperial year round 1-52
- ✓ Big Night year round 1-52
- ✓ Berry Beautifull 05-31

# Lavandula La Diva



La Diva Imperial

873594  
873597  
873596  
873590



La Diva Big Night

Lavandula stoechas LaDiva Big Night  
Lavandula stoechas LaDiva Berry Beautiful  
Lavandula dentata LaDiva Imperial  
Lavandula angustifolia LaDiva Spirit Purple Blue



La Diva  
Berry Beautiful



# Leucanthemum Sweet Daisy



DÜMMEN ORANGE®

**Schneider**  
youngplants



# Leucanthemum Sweet Daisy

TOP Leucanthemum Serie for 3 & 5 Liter overwintered

- 23 cm pot 1 cutting
- Potted week 8
- Flowering beginning June
- Recommended URC weeks in autumn

✓ **RC WEEKS 36-10**

Jane in 19 cm



Jane above is one week earlier compared to Christine below.





# Leucanthemum Sweet Daisy

TOP Leucanthemum Sweet Daisy Jane & Christine for 19 cm pots

- 19 cm pot 1 cutting | potting week 8-12 one cutting
- 19 cm pot 2 cuttings | after week 16 two cuttings



✓ RC WEEKS spring 08-24





# Leucanthemum Sweet Daisy

## TOP Leucanthemum Sweet Daisy

- 12-14 cm pot 1 cutting | potting week 14-24 one cutting

✓ RC WEEKS spring 8-24

873600	Leucanthemum maximum Sweet Daisy™	Christine
873612	Leucanthemum maximum Sweet Daisy™	Jane
873614	Leucanthemum maximum Sweet Daisy™	Rebecca
873610	Leucanthemum maximum Sweet Daisy™	Izabel



Sweet Daisy Izabel



Sweet Daisy Jane



Sweet Daisy Rebecca



Sweet Daisy Christine

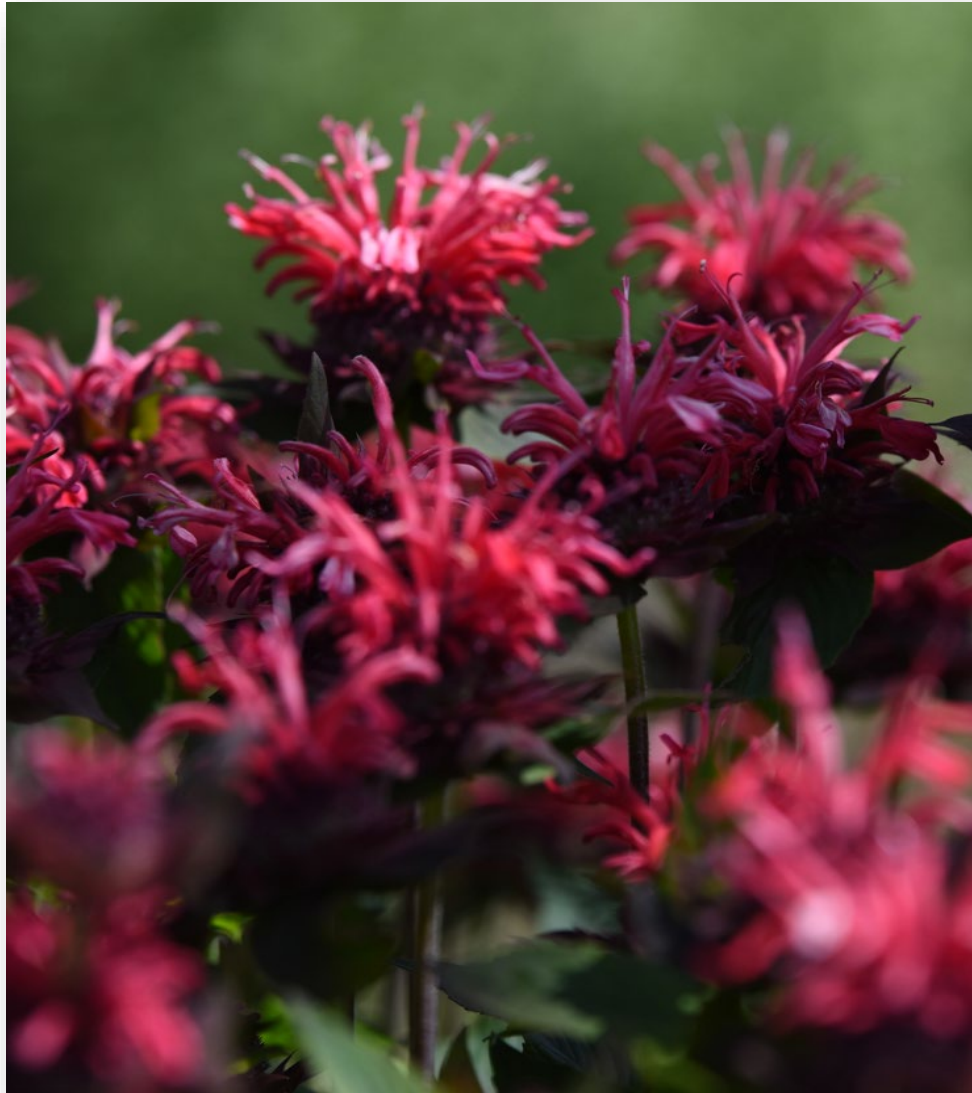


# Leucanthemum Sweet Daisy





# Monarda Pocahontas



873676

Monarda didyma Pocahontas Red Rose



DÜMMEN ORANGE.

**Schneider**  
youngplants



# Pocahontas Red Rose <sup>873676</sup>



## TOP Monarda variety Red Rose

- 1 cutting 19 cm
- Early compact variety - does not brake and keeps on pushing new flowers
- 2 cuttings 21 and bigger first year flowering
- ✓ **RC WEEKS 12-24**
  
- Cuttings for over wintering
- ✓ **RC weeks 34**





# Phlox paniculata Early



- 874104 Phlox paniculata Early® Lavander Pop
- 874106 Phlox paniculata Early® Magenta
- 874110 Phlox paniculata Early® Pink
- 874114 Phlox paniculata Early® Red
- 874116 Phlox paniculata Early® White





# Phlox paniculata Early



## TOP Phlox early overwintered

- 1 cutting 19 cm
- Plant RC in 28-34
- Overwinter outside in Tray or pot
- Pot outside in week 8 (before the plant wakes up from winter )
- No pinch | spacing in week 18
- Ready to sell beginning June
- ✓ **RC WEEKS 28-34**







# Phlox paniculata Early



## TOP Phlox Early first year flowering

- 3 cuttings 19 cm
- Plant week 8-18
- As earlier you pot as better to avoid early induced cuttings
- Fresh cuttings can handle temperature till -5 degrees

## Germany

Start indoor from week 8 RC onwards

Start outdoor from week 12 onwards

Dont use this genetics after week 16 potting if no black out is available

- Ready to sell mid June

✓ **RC WEEKS 8-18**



DÜMMEN ORANGE.

**Schneider**  
youngplants



# Phlox paniculata Flame



- 874122 Phlox paniculata Flame Lilac Star
- 874124 Phlox paniculata Flame Pink
- 874140 Phlox paniculata Flame Purple Eye
- 874144 Phlox paniculata Flame Watermelon





# Phlox paniculata Flame

## TOP Phlox Flame overwintered

- 1 cutting 19 cm -23 cm |
- Over winter outside in Tray or pot |
- No pinch | space week 16 |

✓ **RC WEEKS 28-34**



- Plant RC in 28-34
- Pot outside in week 8
- Ready to sell beginning June



DÜMMEN ORANGE.

**Schneider**  
youngplants





# Phlox paniculata Flame Lilac Star 874122

TOP Phlox Flame variety

New for 2024 and must have

- Outstanding good branching
  - Creates always a nice pot from 12 till 23 cm container
  - Very good garden and landscape variety
  - Nice retail color & matches lovely in the landscape
  - Strong roots & leaves
- 
- Can be produced in wide range of potting weeks due to less inducted cuttings

Over winter production

✓ RC WEEKS 28-34

First year flowering production

✓ RC weeks 8-18





# Salvia nemerosa





# Salvia Salute Blue 874570 & Royal Magenta 874568



## TOP Salvia varieties in the overwinter program 2024

- Salute Deep Blue & Royal Magenta | plant RC 26-32 for big container & 32- 36 for smaller pots
- Potting week 8-12 in spring | first flower after week 19 | reflowers after pinching within 4 weeks
- ✓ RC weeks 26-36 for over winter production





# Salvia Midnight Serie

## TOP Salvia Midnight Serie

- 1 cutting for 12 cm pot
- Compact genetics !
- One cutting overwintered 17 pot max!
- Don't start to late - no potting after week 16 for same year sales
- Most outstanding Salvia if you know the details and how to grow
- Try Duos!
- Early potting recommended to get a decend habit

First year flowering

✓ **RC WEEKS 06-24**

Over wintering

✓ **RC weeks 26-36**



874562  
874564

Salvia nemorosa Midnight Purple  
Salvia nemorosa Midnight Rose



DÜMMEN ORANGE®

**Schneider**  
youngplants



# Salvia Noche 874563 & Noble Knight 874557



## TOP Novelities 24/25

- 1 cutting for 12 cm pot
- Overwintered great products
- Landscape performance!
- Can be grown as annual

### Noche

- ✓ great pot performance
- ✓ good branching
- ✓ perfect habit
- ✓ great for combos

### Noble Knight

- ✓ big flowers
- ✓ self claing
- ✓ good branching
- ✓ perfect habit





# Veronica - Candela



Candela Pink



Candela Blue



Candela Purple



875020	Veronica Candela Blue
875021	Veronica Candela Pink
875023	Veronica Candela Purple



DÜMMEN ORANGE.

**Schneider**  
youngplants



# Veronica - Candela Combinations



## TOP Veronica Candela Serie

- 1 cutting for 12 cm pot
- Compact genetics !
- One cutting overwintered for bigger container
  
- First year flowering possible
- RC week 16 requires 3 cuttings per 19 cm
- Try Duos! In smaller and bigger pots

First year flowering

✓ **RC WEEKS 10-20**

Over wintering

✓ **RC WEEKS 32-38**



875020 Veronica Candela Blue  
875021 Veronica Candela Pink



# Iberis – White Shadow





# Iberis – White Shadow

TOP Iberis variety

- 12 cm pot 1 cutting
- Flowering in early spring
- Recommended potting weeks Germany  
Week 28-32

✓ **RC WEEKS 26-34**



872613 Iberis sempervirens White Shadow





# Phlox subulata - Spring



Spring Dark Leaf Pink



Spring Soft Pink



Spring White



Spring Pink



Spring Purple



Spring Lavender



# Phlox subulata – Spring





# Phlox subulata - Spring



## TOP Phlox subulata Spring Series

- 1 cutting for 12 cm pot
- Compact genetics
- Early and round shaped gentics
- No spider growth
- No brown shots ( outwintering )
- Wide range of different colors

### ✓ RC WEEKS 26-38

82140	Phlox subulata Spring®	Blue
80425	Phlox subulata Spring®	Hot Pink
80155	Phlox subulata Spring®	Lavender
82137	Phlox subulata Spring®	Pink
80157	Phlox subulata Spring®	Purple
82136	Phlox subulata Spring®	Scarlet
82146	Phlox subulata Spring®	Soft Pink
80158	Phlox subulata Spring®	White
87029	Phlox subulata Spring®	Dark Leaf Pink



DÜMMEN ORANGE®

**Schneider**  
youngplants